

Oceanis®

Relaxation and Birthing Pool



Assembly Instructions

F-072 GB Rev00 14.03.2024

Assembly instructions: Oceanis® relaxation and birthing pool

Item number: OC-33000

1 Imprint

Manufacturer:

febromed GmbH & Co. KG

Am Landhagen 52

59302 Oelde, Germany

Contact:

Phone: +49 2522 9201900

Fax: +49 2522 9201919

Internet: www.febromed.de

E-mail: info@febromed.de

Registration court:

Münster District Court

HRB no.: 10077 febromed-Beteiligungs-GmbH

HRA no.: 7608 febromed GmbH & Co. KG

ID no.:

DE 814491165

Managing Directors:

Dr. Reinhold Festge

Hubert Brommann

Proprietary note:

Distribution and reproduction of this document, utilisation and communication of its content is prohibited, unless expressly permitted.

Non-compliance will result in compensation for damages.

All rights reserved in the case of patent registration, utility model registration or design registration.

Protection fee:

€24.00

2 Table of Contents

1	Legal Information	2
2	Table of Contents	3
3	About the Assembly Instructions	4
	3.1 Purpose of Assembly Instructions	4
	3.2 Assembling the Oceanis®	4
	3.3 Using the Assembly Instructions	4
4	Setting up the Oceanis®	5
5	Sanitary installations	5
	5.1 Connection water pipes	6
	5.2 Sewage connection	7
6	Electrical Installation	7
7	Assemble components	7
	7.1 Shower head holder	7
	7.2 Shower hose	8
	7.3 Shower head	8
	7.4 Double spout inlet tap	8
8	Adjusting the water temperature	9
9	Sealing Pool Connections	9
10	List of Figures	11
11	Appendices	12
	11.1 Appendix A: Schematic watercourse	12
	11.2 Appendix B: Electrical documentation	13
12	Notes	26

3 About the Assembly Instructions

ⓘ Handling the Assembly Instructions

- Read the assembly instructions completely before unpacking and installing the Oceanis®.
- Always keep the assembly instructions handy while setting up the Oceanis®.
- When entrusting the Oceanis® to a third party, always include the assembly instructions.

3.1 Purpose of Assembly Instructions

The assembly instructions describe the assembly process of the Oceanis® recommended by the manufacturer. The application of the assembly instructions is intended to prevent damage to the Oceanis® as well as the equipment and to protect the health and life of personnel and patients. If used as described in the assembly instructions, the service life of the Oceanis® will also be extended.

3.2 Assembling the Oceanis®

The Oceanis® relaxation and birthing pool may only be set up and installed by authorised assembly personnel.

The evidence of definition, conduct, inspection and approval, which is required in this respect, is to be documented and carefully stored.

3.3 Using the Assembly Instructions

It is important to study the assembly instructions in their entirety. Do not leave out any chapters.

The Oceanis® must not be set up and assembled until the assembly instructions have been

fully understood. If you have any questions, please contact our hotline:

Febromed hotline

☎ + 49 (0) 2522 9201900

All chapters of this manual are listed in the table of contents on page 3. The illustrations shown in these assembly instructions are intended to clarify the instructions described in the texts and are of an exemplary nature. In the following table, labels for instructions are listed to illustrate the degree of hazards. The labels are for orientation only. The classification of the hazard potential is only exemplary, a higher potential must be taken into account. febromed assumes no liability for the classification.

Signal Word and Meaning

ⓘ Information Important to Know

ATTENTION

Action can cause **property damage** or **environmental damage**

⚠ CAUTION

Action can cause **minor injury**

⚠ WARNING

Action can cause **considerable property damage** or **considerable injury**



DANGER

Action can cause **serious injury** or **death**

4 Setting up the Oceanis®

The Oceanis® is delivered pre-assembled on a pallet in a carton. Additional components can be found well-padded in the box. Two people are required to set up the Oceanis® birthing pool.

ATTENTION

Property Damage Due to Sharp Objects

Sharp objects can damage the surface of the pool.

- Do not use sharp objects to remove packaging material.

ATTENTION

Violation of Local Regulations

Violating local regulations when disposing of packaging material may result in legal consequences.

- Dispose of all packing materials in accordance with local regulations.

- Transport the packed pool to the intended installation room.
- Carefully remove all packing material.
- Check the delivery for completeness.
- In case of shortages, please contact our hotline - see chapter 3, page 4.
- Align the pool with the intended installation position.
- Dispose of the packaging material in accordance with local regulations.

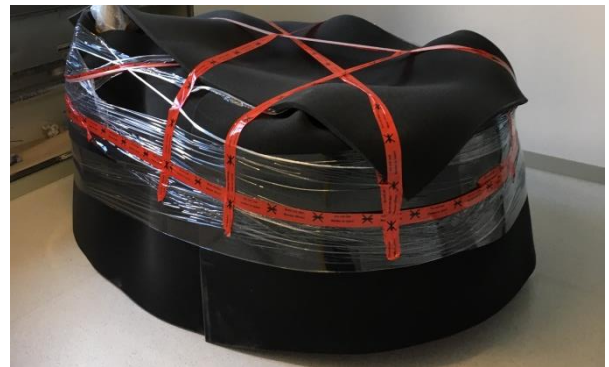


Fig.1: Packaged Oceanis®



Fig.2: Oceanis® Unpacked and Aligned.

5 Sanitary installations

The installation work may only be carried out by qualified and authorized persons in compliance with the installation regulations of the local water supply companies and the provisions of DIN 1988.



WARNING

Danger of Slipping

Water-soaked surfaces are slippery and can cause people to fall.

- Immediately remove leaked water with absorbent material such as a cloth or fleece.

! DANGER

Short-circuit Hazard

If water comes into contact with power sources, this can result in serious personal injury and death.

- Disconnect surrounding power lines from the power supply during water installation.
- Immediately remove leaked water with absorbent material such as a cloth or fleece.

5.1 Connection water pipes

1. Connect the pool to the cold and hot water pipes prepared by the customer.
2. The connection diagram for the hot and cold water supply is shown in appendix A. (Page 12)
3. Make sure that the on-site water connections are fitted with a ball valve or that there is no pressure on the pipes.
4. Seal the on-site pipe connections (fresh water, waste water, electrical supply) to the floor.

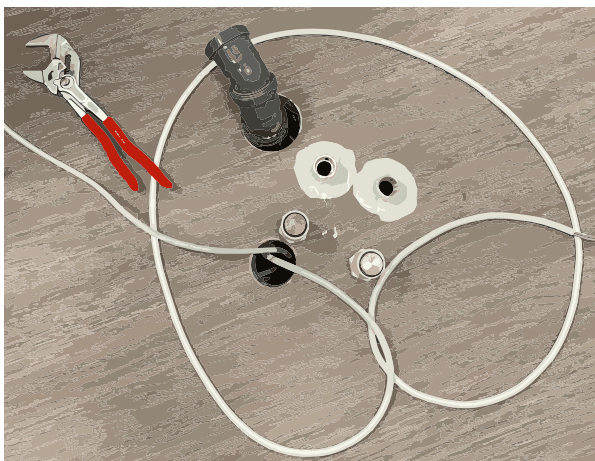


Figure 1 Sealing the connection pipes.

5. Screw the supplied screw connections into the on-site water connections. (fig. 3 – item 1). Use drinking water – certified sealing material for this.

6. Connect the tray to the cold and hot water pipes prepared on site. Place the supplied sealing ring (2) between the screw connection (1) and the union nut (3). Then tighten the union nut.

- Cold water: blue
- Hot water: red
- Use corrugated stainless steel pipes DN 20
- Rigid pipes are not permitted due to the risk of breakage.



Figure 2 Connection water pipes.



Figure 3 Water connection pool side.

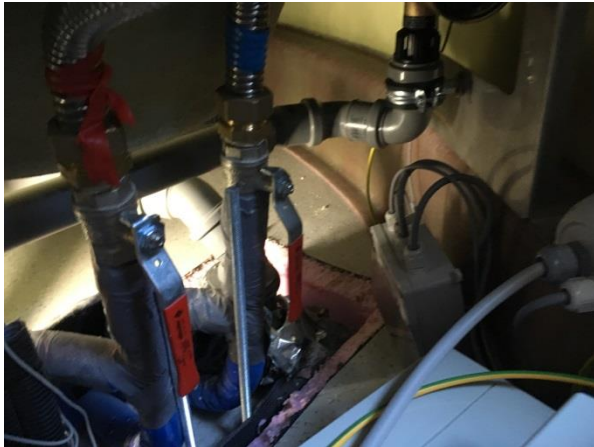


Figure 4 Water connection on-site.

5.2 Sewage connection

1. Connect the tray to the water drain prepared on site.

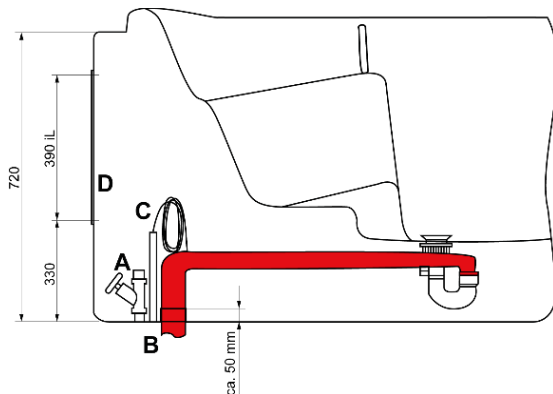


Figure 5 Installing the drain.

2. The corresponding material for creating the wastewater pipe is not included in the scope of delivery.
3. Open the shut-off valves for cold and hot water.
4. Check all pipes and connections for leaks.
5. Recreate all leaking connections and seal them.

6 Electrical Installation



Fire Hazard

Improper electrical installations can lead to a fire hazard.

- Only trained and authorized personnel may carry out the electrical installation.
- Disconnect all power lines from the mains during electrical installation.

Check the insulation of the electrical cables before, during and after installation.



Danger to Life Due to Electric Shock

Improper electrical installations can endanger the life of operators and users.

- Only trained and authorized personnel may carry out the electrical installation.
- Disconnect all power lines from the mains during electrical installation.
- Check the insulation of the electrical cables before, during and after installation.

1. The electrical documentation is shown in appendix B. (Page 13)
2. Disconnect all power lines from the mains.
3. Carry out the electrical installation according to the installation diagram supplied by the manufacturer.
4. Close the circuit again.
5. Check the functionality of the electronic components of the pool.

7 Assemble components

7.1 Shower head holder

1. Screw the two shower head holders into the designated position.

2. Use an allen key and the corresponding screws.
3. Press the cover cap into the shower head holder from above until you hear a “click”.

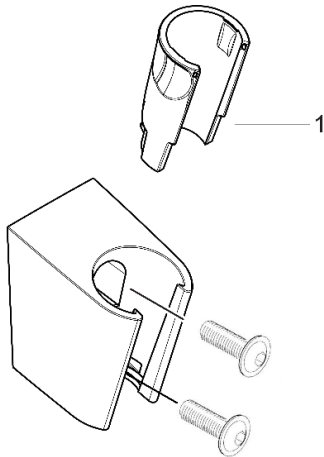


Figure 6 Fitting the shower holder.

- ✓ The shower head holders are fully assembled.

7.2 Shower hose

1. Insert the sealing ring into the shower hose.
2. Turn the shower hose to the angled inlet elbow.

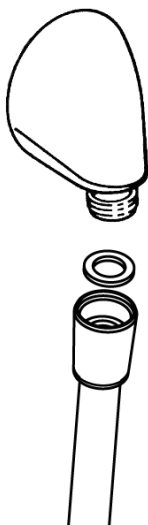


Figure 7 Fitting the shower hose.

- ✓ The shower hose is fully assembled.

7.3 Shower head

1. Insert the sealing ring into the shower hose.
2. Turn the shower head into the shower head hose.



Figure 8 Fitting the shower head.

3. Check the shower head for leaks.
- ✓ The shower head is fully assembled.

7.4 Double spout inlet tap

If you have ordered the option of the double spout, the inlet tap of the Oceanis® can be removed after each filling of the pool in order to guarantee the pregnant woman and the obstetric personnel optimum freedom of movement. Before you can fill the Oceanis®, you have to mount the inlet tap.

To mount the inlet tap, please proceed as follows (Fig. 9):

1. Keep the quick – lock on the connector of the inlet tap pulled down with one hand and place the inlet tap in the connector with the other hand.
2. Release the quick lock.
- ✓ The inlet tap is now mounted.

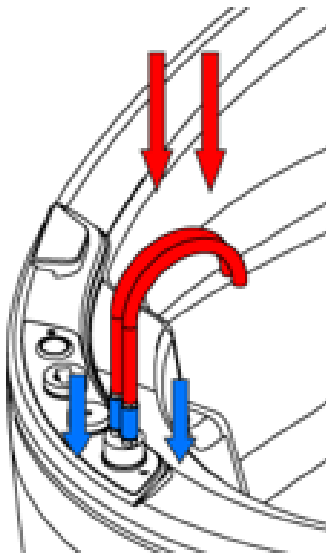


Figure 9 Mount the double spout inlet tab.

To disassemble the inlet tap, please proceed as follows (Fig. 10):

1. Hold the quick-release fastener of the connection piece down with one hand and remove the inlet tap from the connection piece with the other hand.
2. Release the quick-release fastener again.
3. Put the cover cap on the connector.
- ✓ The birthing pool can now be used.

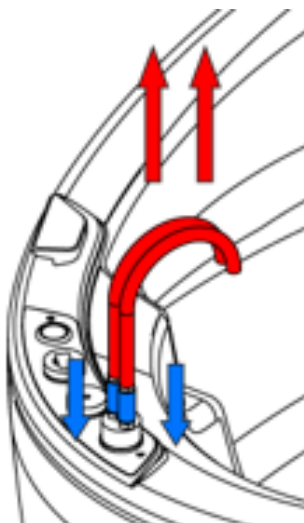


Figure 10 Disassemble the double spout inlet tab.

8 Adjusting the water temperature

After you have connected the water pipes and carried out the electrical installation, the outlet temperature of the thermostat must be checked. The thermostat must be adjusted if the water temperature from the shower differs from the water temperature set on the thermostat.

Proceed as follows:

1. Remove the cover cap from the thermostat [1].
2. Turn on the water and measure the water temperature with a thermometer. [2]
3. Turn the thermostat until the water temperature is 40°C. [2]
4. Replace the cover cap on the thermostat. Make sure that the temperature display on the cover cap shows exactly 40°C on the scale.

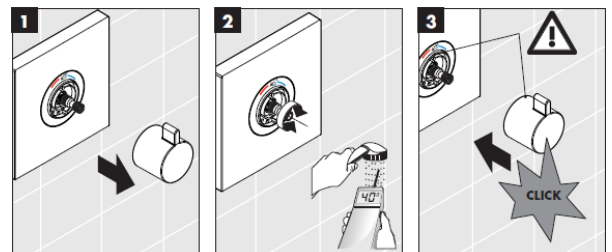


Figure 11 Adjusting the water temperature.

9 Sealing Pool Connections

As a rule, the birthing pools are delivered glued together at the factory. In exceptional cases, the outer and inner bath bodies may have to be glued together during assembly. If the pool has already been delivered glued, please follow steps 3 - 6.

If the pool is not glued, please follow all steps in this chapter.

1. Fill the birthing pool halfway with water.
2. Seal the connection between the inner and the outer bath body with a silicone joint.
3. Seal the bath body and the floor with a silicone joint.
4. Allow the silicone joints to dry in accordance with the manufacturer's instructions.
5. Drain the water from the birthing pool.
6. Clean the birthing pool.

Note:

- Leave a small gap between the birthing pool and the floor when sealing it. (Fig. 13) [1]
- This allows water to escape at this point in the event of a leak.
- This makes it easier to detect possible leaks in the connection pipes or similar.

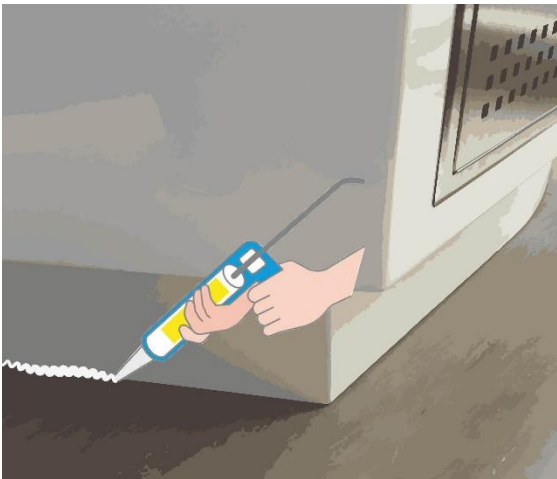


Figure 12 Set silicone joint.

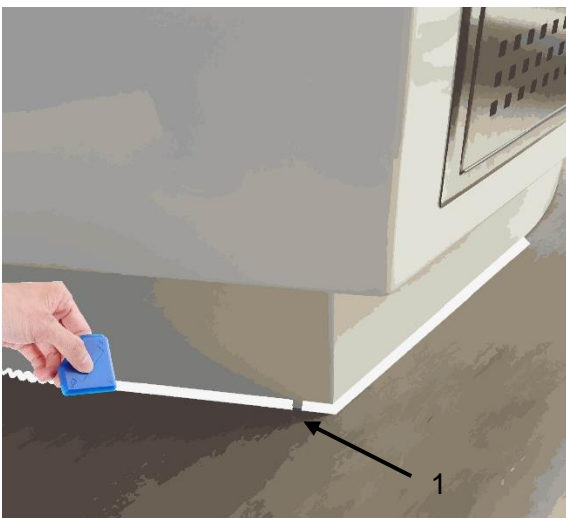


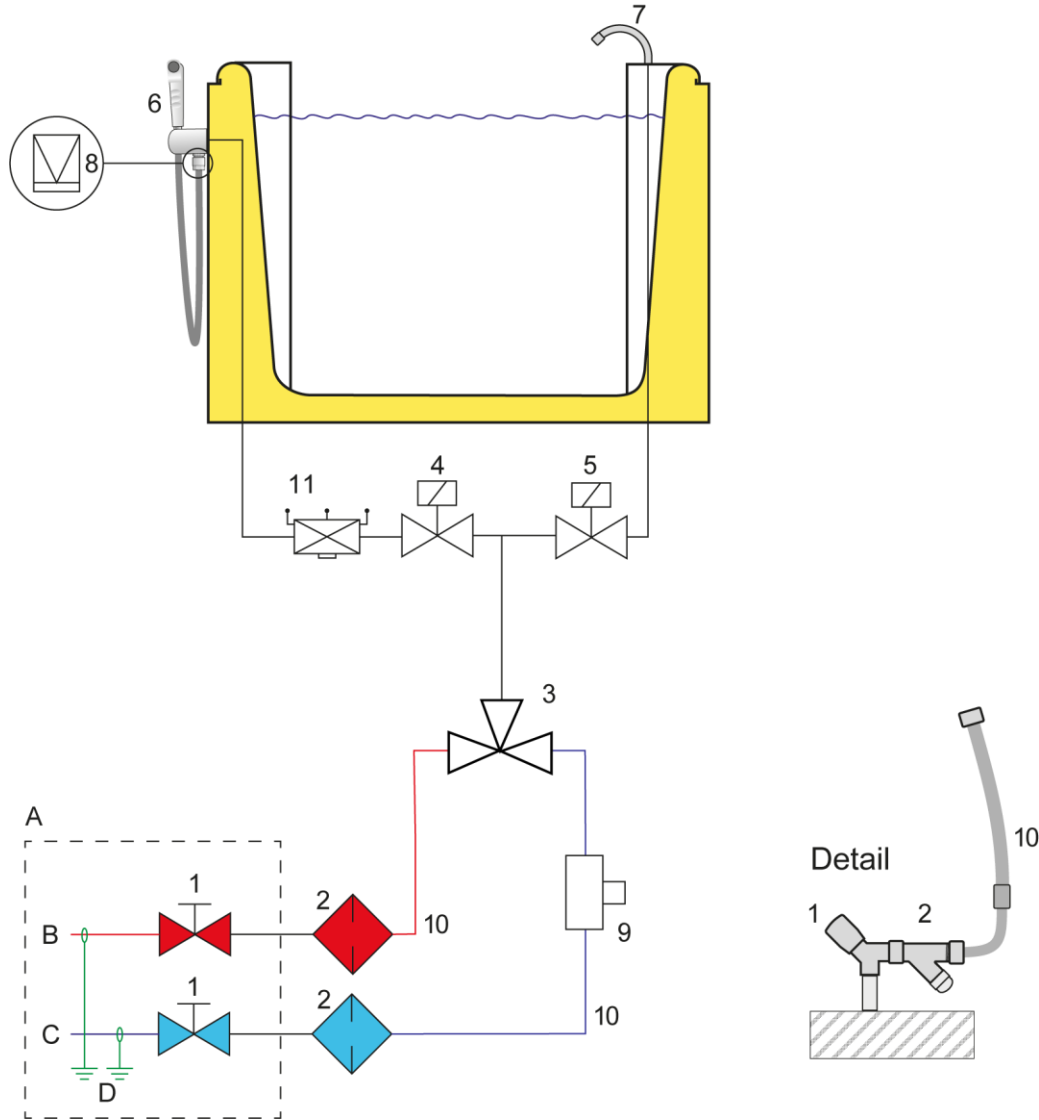
Figure 13 Smooth the silicone joint with a joint smoother.

10 List of Figures

Figure 1 Sealing the connection pipes.	6
Figure 2 Connection water pipes.....	6
Figure 3 Water connection pool side.....	6
Figure 4 Water connection on-site.	7
Figure 5 Installing the drain.	7
Figure 6 Fitting the shower holder.....	8
Figure 7 Fitting the shower hose.	8
Figure 8 Fitting the shower head.....	8
Figure 9 Mount the double spout inlet tab. ...	9
Figure 10 Disassemble the double spout inlet tab.	9
Figure 11 Adjusting the water temperature. .	9
Figure 12 Set silicone joint.	10
Figure 13 Smooth the silicone joint with a joint smoother.....	10

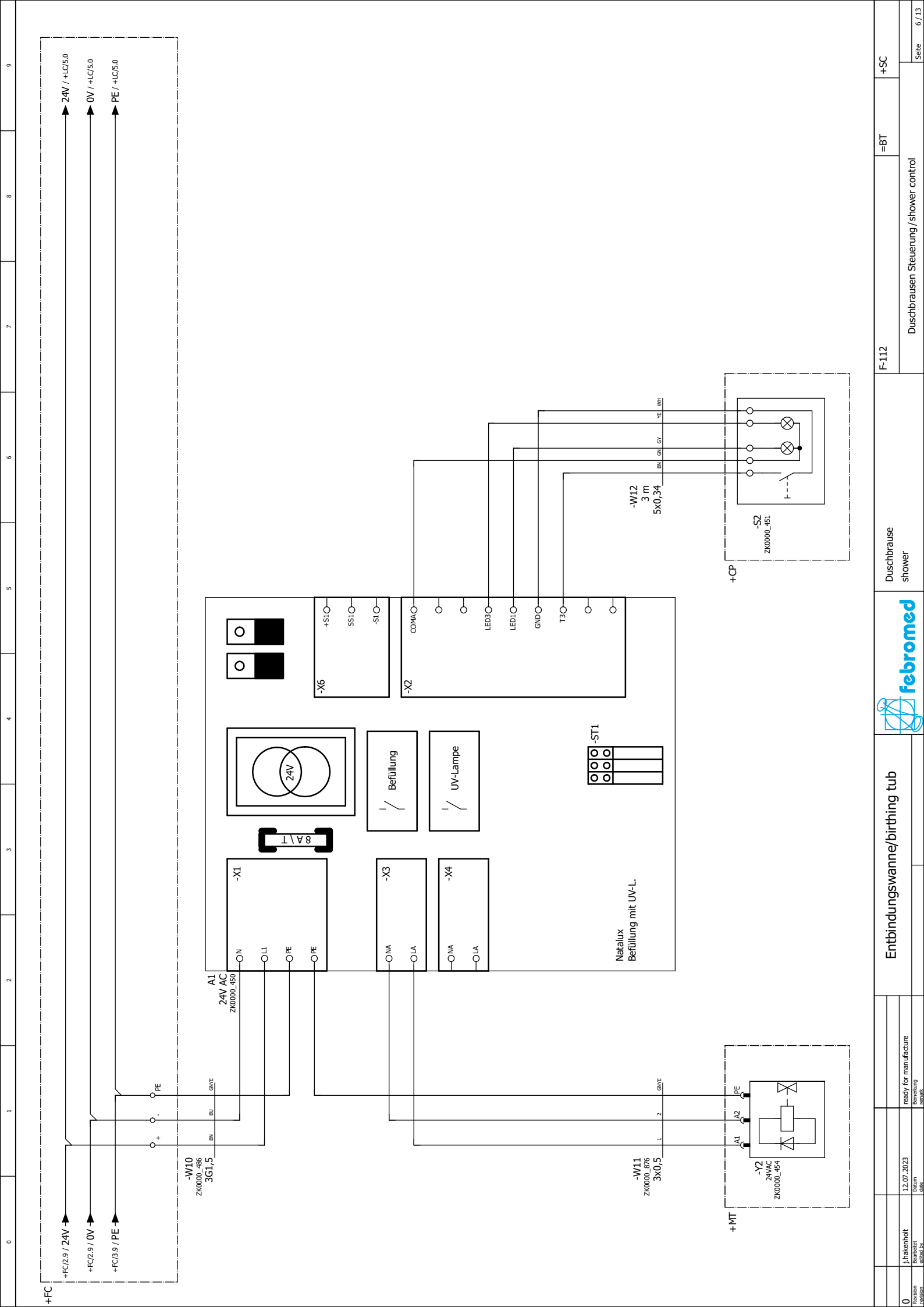
11 Appendices

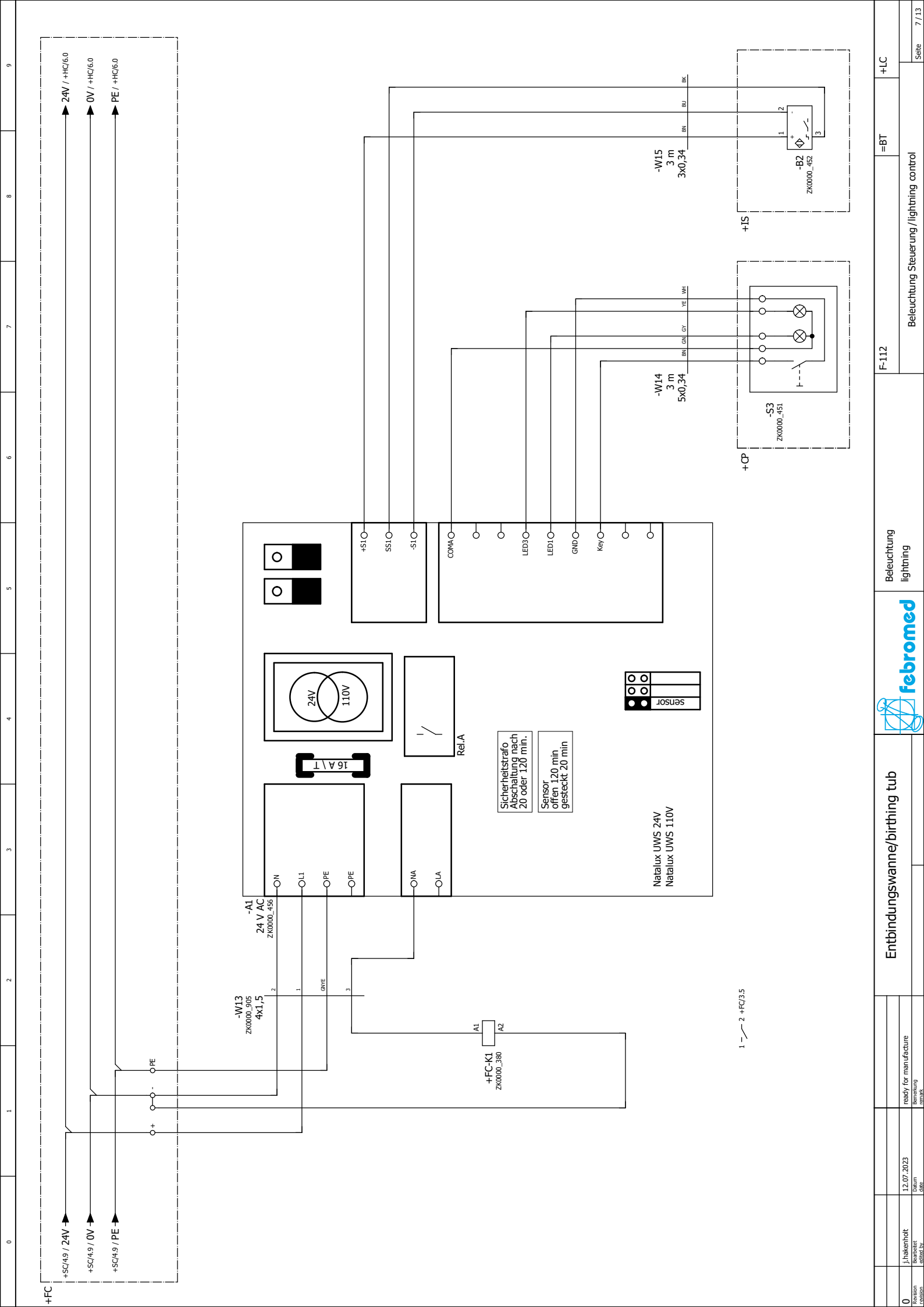
11.1 Appendix A: Schematic watercourse

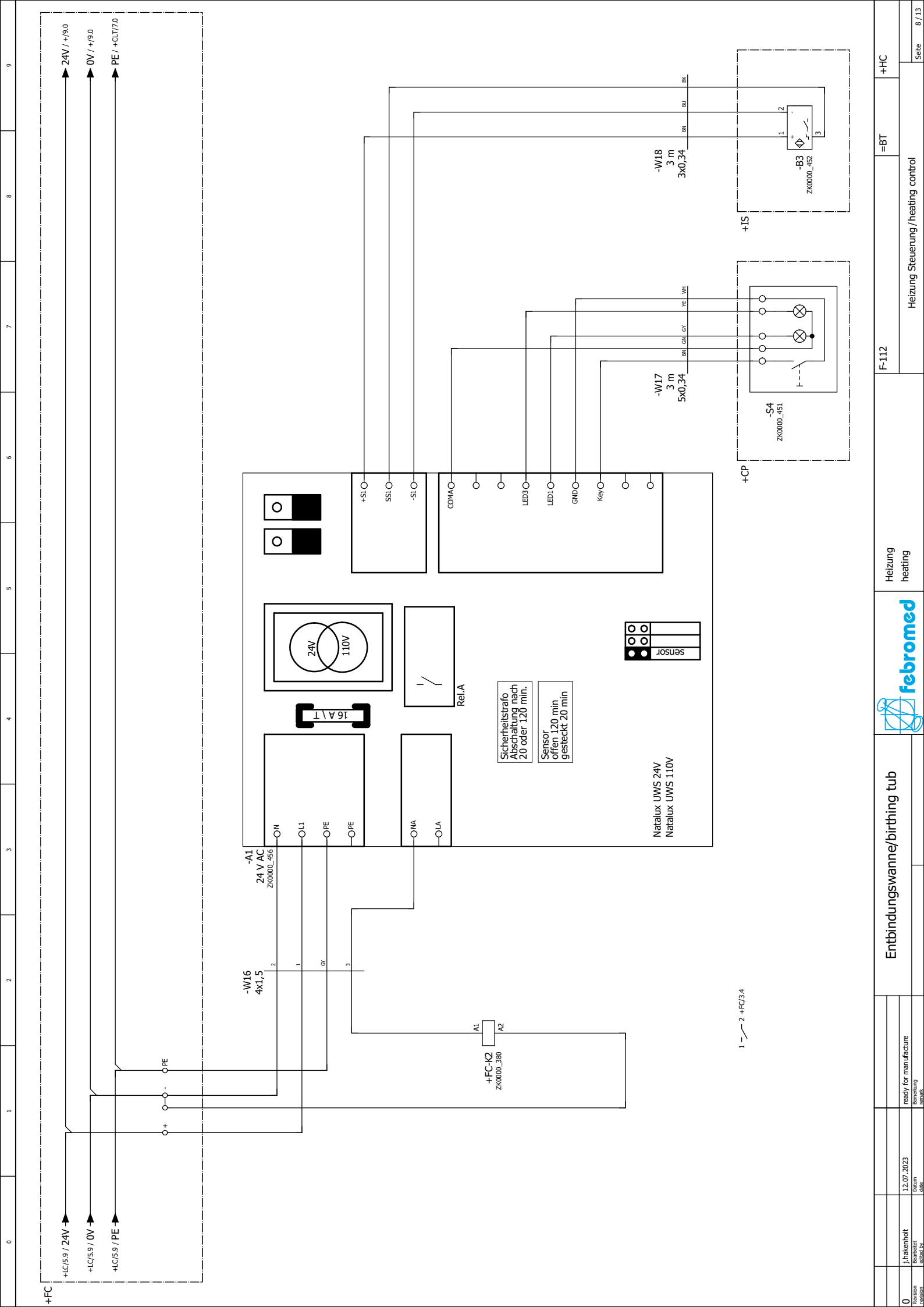


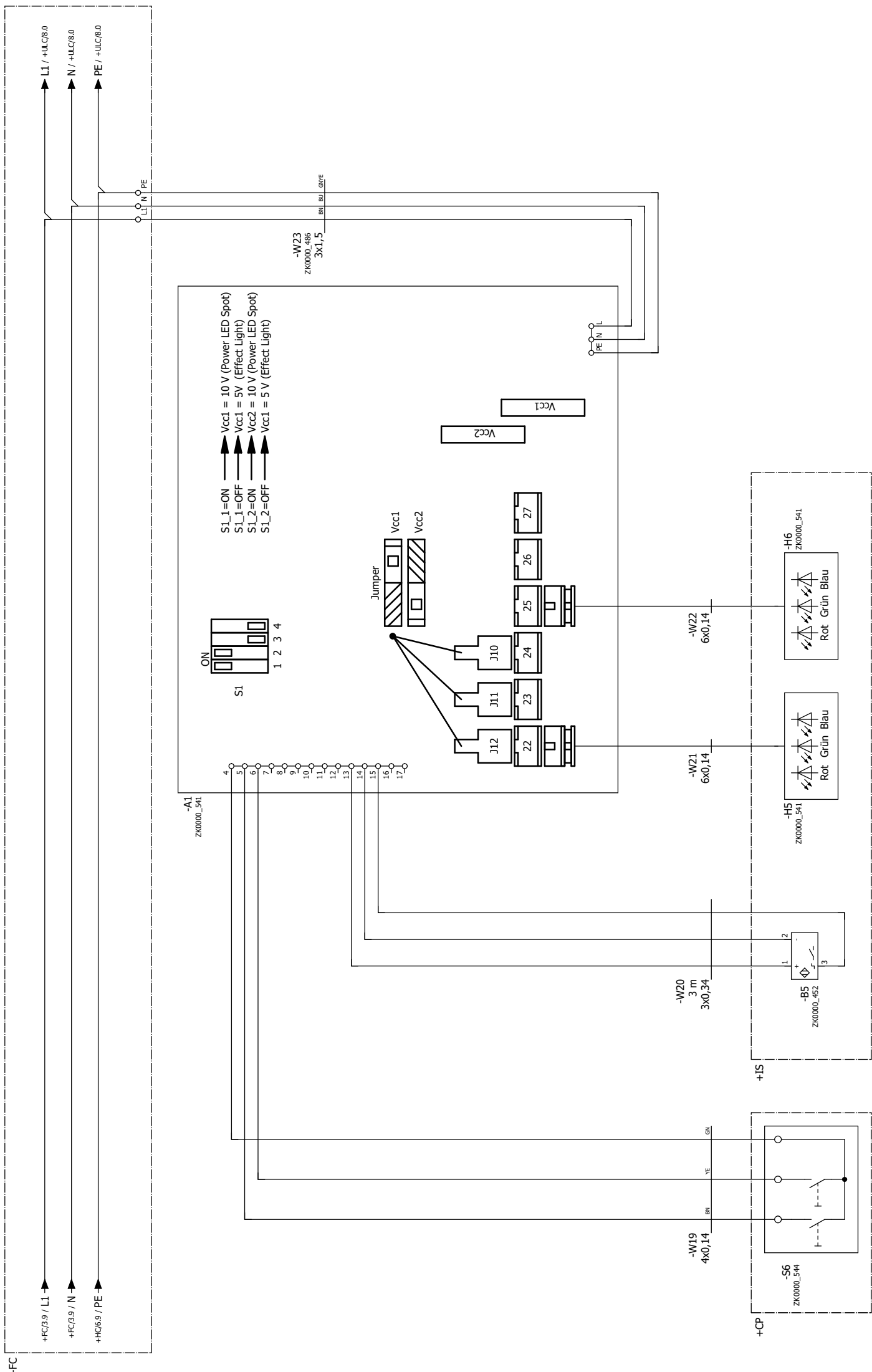
A	On-site zone
B	Warm water 3/4"
C	Cold water 3/4"
D	Potential equalisation
1	Shut-off valve (on site)
2	Inclined filter (optional) Article no.: ZK0000_578
3	Mixer tap Article no.: ZK0000_361
4	Shower head solenoid valve Article no.: ZK0000_454

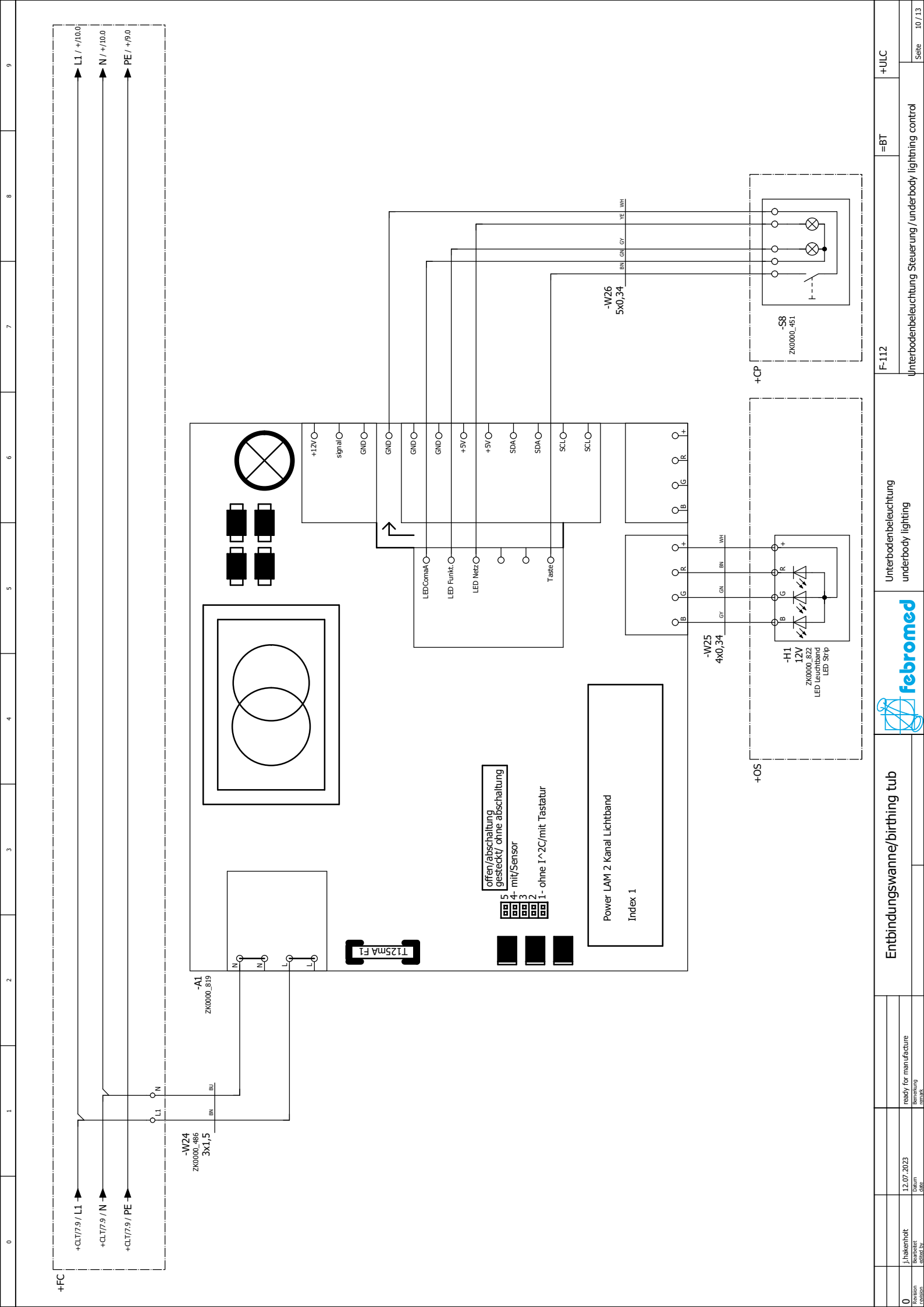
5	Solenoid valve filling Article no.: ZK0000_454
6	Shower head Article no.: ZK0000_617
7	Inlet tap Article no.: GR-19-160
8	Non-return valve shower head Article no.: ZK0000_372
9	UV-Filter cold water Article no.: ZK0000_694
10	Stainless steel corrugated hose
11	System separator BA Article no.: ZK0000_489

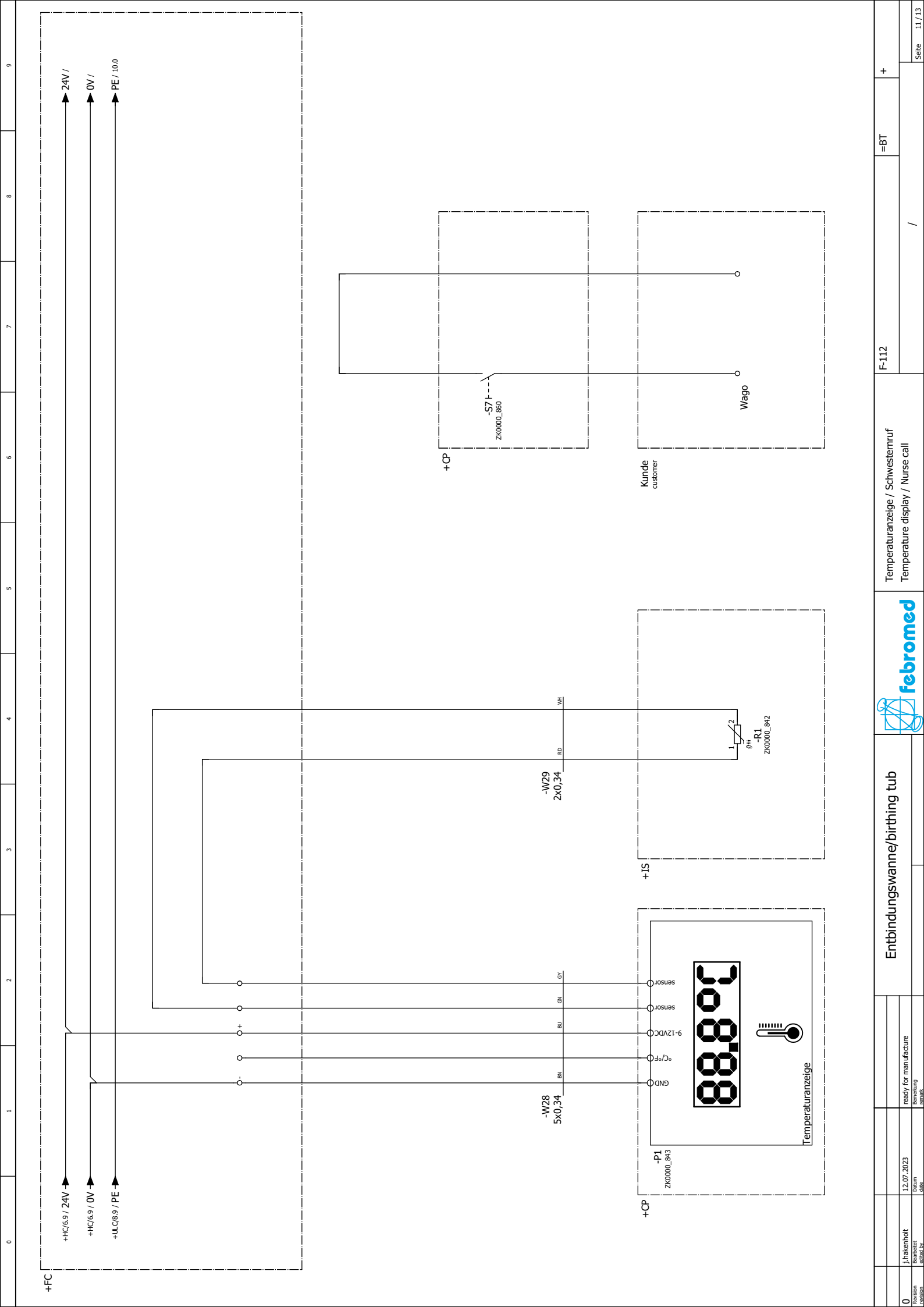




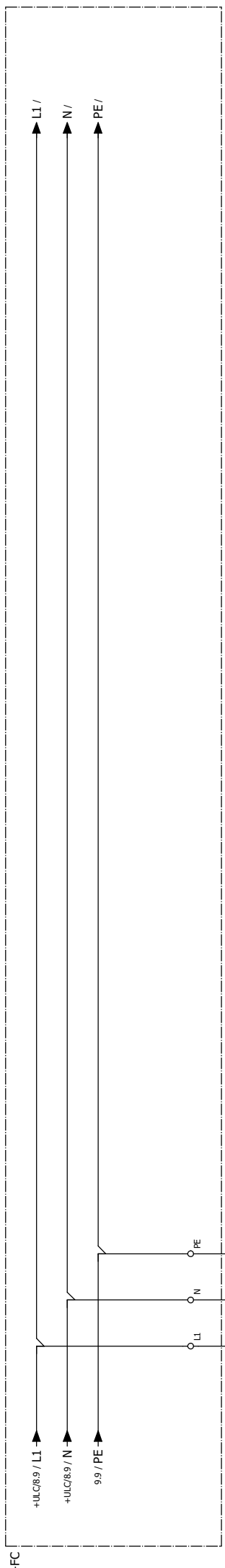




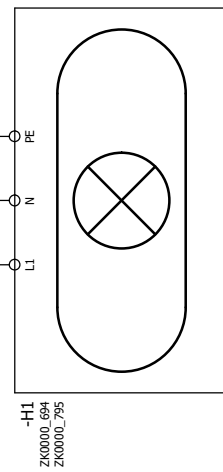




0	1	2	3	4	5	6	7	8	9
+FC									
+HC/6.9/24V									
+HC/6.9/0V									
+ULC/8.9/PE									
+CP									
-W28 5x0,34									
-W29 2x0,34									
+TS									
R1 ZK0000_842									
Wago									
Kunde customer									
-S7 ZK0000_860									
Temperaturanzeige									
P1 ZK0000_843									
GND									
9-12VDC									
sensor									
sensor									
+									
BU									
GV									
RD									
WH									
+HC/6.9/24V									
+HC/6.9/0V									
+ULC/8.9/PE									
+CP									
-W28 5x0,34									
-W29 2x0,34									
+TS									
R1 ZK0000_842									
Wago									
Kunde customer									
-S7 ZK0000_860									
Temperaturanzeige									
P1 ZK0000_843									
GND									
9-12VDC									
sensor									
sensor									
+									
BU									
GV									
RD									
WH									
+HC/6.9/24V									
+HC/6.9/0V									
+ULC/8.9/PE									
+CP									
-W28 5x0,34									
-W29 2x0,34									
+TS									
R1 ZK0000_842									
Wago									
Kunde customer									
-S7 ZK0000_860									
Temperaturanzeige									
P1 ZK0000_843									
GND									
9-12VDC									
sensor									
sensor									
+									
BU									
GV									
RD									
WH									
+HC/6.9/24V									
+HC/6.9/0V									
+ULC/8.9/PE									
+CP									
-W28 5x0,34									
-W29 2x0,34									
+TS									
R1 ZK0000_842									
Wago									
Kunde customer									
-S7 ZK0000_860									
Temperaturanzeige									
P1 ZK0000_843									
GND									
9-12VDC									
sensor									
sensor									
+									
BU									
GV									
RD									
WH									
+HC/6.9/24V									
+HC/6.9/0V									
+ULC/8.9/PE									
+CP									
-W28 5x0,34									
-W29 2x0,34									
+TS									
R1 ZK0000_842									
Wago									
Kunde customer									
-S7 ZK0000_860									
Temperaturanzeige									
P1 ZK0000_843									
GND									
9-12VDC									
sensor									
sensor									
+									
BU									
GV									
RD									
WH									
+HC/6.9/24V									
+HC/6.9/0V									
+ULC/8.9/PE									
+CP									
-W28 5x0,34									
-W29 2x0,34									
+TS									
R1 ZK0000_842									
Wago									
Kunde customer									
-S7 ZK0000_860									
Temperaturanzeige									
P1 ZK0000_843									
GND									
9-12VDC									
sensor									
sensor									
+									
BU									
GV									
RD									
WH									
+HC/6.9/24V									
+HC/6.9/0V									
+ULC/8.9/PE									
+CP									
-W28 5x0,34									
-W29 2x0,34									
+TS									
R1 ZK0000_842									
Wago									
Kunde customer									
-S7 ZK0000_860									
Temperaturanzeige									
P1 ZK0000_843									
GND									
9-12VDC									
sensor									
sensor									
+									
BU									
GV									
RD									
WH									
+HC/6.9/24V									
+HC/6.9/0V									
+ULC/8.9/PE									
+CP									
-W28 5x0,34									
-W29 2x0,34									
+TS									
R1 ZK0000_842									
Wago									
Kunde customer									
-S7 ZK0000_860									
Temperaturanzeige									
P1 ZK0000_843									
GND									
9-12VDC									
sensor									
sensor									
+									
BU									
GV									
RD									
WH									
+HC/6.9/24V									
+HC/6.9/0V									
+ULC/8.9/PE									
+CP									
-W28 5x0,34									
-W29 2x0,34									
+TS									
R1 ZK0000_842									
Wago									
Kunde customer									
-S7 ZK0000_860									
Temperaturanzeige									
P1 ZK0000_843									
GND									
9-12VDC									
sensor									
sensor									
+									
BU									
GV									
RD									
WH									
+HC/6.9/24V									
+HC/6.9/0V									
+ULC/8.9/PE									
+CP									
-W28 5x0,34									
-W29 2x0,34									
+TS									
R1 ZK0000_842									
Wago									
Kunde customer									
-S7 ZK0000_860									
Temperaturanzeige									
P1 ZK0000_843									
GND									
9-12VDC									
sensor									
sensor									
+									
BU									
GV									
RD									
WH									
+HC/6.9/24V									
+HC/6.9/0V									
+ULC/8.9/PE									
+CP									
-W28 5x0,34									
-W29 2x0,34									
+TS									
R1 ZK0000_842									
Wago									
Kunde customer									
-S7 ZK0000_860									
Temperaturanzeige									
P1 ZK0000_843									
GND									
9-12VDC									
sensor									
sensor									
+									
BU									
GV									
RD									
WH									
+HC/6.9/24V									
+HC/6.9/0V									
+ULC/8.9/PE									
+CP									
-W28 5x0,34									
-W29 2x0,34									
+TS									
R1 ZK0000_842									
Wago									
Kunde customer									
-S7 ZK0000_860									
Temperaturanzeige									
P1 ZK0000_843									
GND									
9-12VDC									
sensor									
sensor									
+									
BU									
GV									
RD									
WH									
+HC/6.9/24V									
+HC/6.9/0V									
+ULC/8.9/PE									
+CP									
-W28 5x0,34									
-W29 2x0,34									
+TS									
R1 ZK0000_842									
Wago									
Kunde customer									
-S7 ZK0000_860									
Temperaturanzeige									
P1 ZK0000_843									
GND									
9-12VDC									
sensor									
sensor									
+									
BU									
GV									
RD									
WH									
+HC/6.9/24V									
+HC/6.9/0V									
+ULC/8.9/PE									
+CP									
-W28 5x0,34									
-W29 2x0,34									
+TS									
R1 ZK0000_842									
Wago									
Kunde customer									
-S7 ZK0000_860									
Temperaturanzeige									
P1 ZK0000_843									
GND									
9-12VDC									
sensor									
sensor									
+									
BU									
GV									
RD									
WH									
+HC/6.9/24V									
+HC/6.9/0V									
+ULC/8.9/PE									
+CP									
-W28 5x0,34									
-W29 2x0,34									
+TS									
R1 ZK0000_842									
Wago									
Kunde customer									
-S7 ZK0000_860									
Temperaturanzeige									
P1 ZK0000_843									
GND									
9-12VDC									
sensor									
sensor									
+									
BU									
GV									
RD									
WH									
+HC/6.9/24V									
+HC/6.9/0V									
+ULC/8.9/PE									
+CP									
-W28 5x0,34									
-W29 2x0,34									
+TS									
R1 ZK0000_842									
Wago									
Kunde customer									
-S7 ZK0000_860									
Temperaturanzeige									
P1 ZK0000_843									
GND									
9-12VDC									
sensor									
sensor									
+									
BU									
GV									
RD									
WH									
+HC/6.9/24V									
+HC/6.9/0V									
+ULC/8.9/PE									
+CP									
-W28 5x0,34									
-W29 2x0,34									
+TS									
R1 ZK0000_842									
Wago									
Kunde customer									
-S7 ZK0000_860									
Temperaturanzeige									
P1 ZK0000_843									
GND									
9-12VDC									
sensor									
sensor									
+									
BU									
GV									
RD									
WH									
+HC/6.9/24V									
+HC/6.9/0V									
+ULC/8.9/PE									
+CP									
-W28 5x0,34									
-W29 2x0,34									
+TS									
R1 ZK0000_842									
Wago									
Kunde customer									
-S7 ZK0000_860									
Temperaturanzeige									
P1 ZK0000_843									
GND									
9-12VDC									
sensor									
sensor									
+									
BU									
GV									
RD									
WH									
+HC/6.9/24V									
+HC/6.9/0V									
+ULC/8.9/PE									
+CP									
-W28 5x0,34									
-W29 2x0,34									
+TS									
R1 ZK0000_842									
Wago									
Kunde customer									
-S7 ZK0000_860									
Temperaturanzeige									
P1 ZK0000_843									
GND									
9-12VDC									
sensor									
sensor									
+									
BU									
GV									
RD									
WH									
+HC/6.9/24V									
+HC/6.9/0V									
+ULC/8.9/PE									
+CP									
-W28 5x0,34									
-W29 2x0,34									
+TS									
R1 ZK0000_842									
Wago									
Kunde customer									
-S7 ZK0000_860									
Temperaturanzeige									
P1 ZK0000_843									
GND									
9-12VDC									
sensor									
sensor									
+									
BU									
GV									
RD									
WH									
+HC/6.9/24V									
+HC/6.9/0V									
+ULC/8.9/PE									
+CP									
-W28 5x0,34									
-W29 2x0,34									
+TS									
R1 ZK0000_842									
Wago									
Kunde customer									
-S7 ZK0000_860									
Temperaturanzeige									
P1 ZK0000_843									
GND									
9-12VDC									
sensor									
sensor									
+									
BU									
GV									
RD									
WH									
+HC/6.9/24V									
+HC/6.9/0V									
+ULC/8.9/PE									
+CP									
-W28 5x0,34									
-W29 2x0,34									
+TS									
R1 ZK0000_842									
Wago									
Kunde customer									
-S7 ZK0000_860									
Temperaturanzeige									
P1 ZK0000_843									
GND									
9-12VDC									
sensor									
sensor									
+									
BU									
GV									
RD									
WH									
+HC/6.9/24V									
+HC/6.9/0V									
+ULC/8.9/PE									
+CP									
-W28 5x0,34									
-W29 2x0,34									
+TS									
R1 ZK0000_842									
Wago									
Kunde customer									
-S7 ZK0000_860									
Temperaturanzeige									
P1 ZK0000_843									
GND									
9-12VDC									
sensor									
sensor									
+									
BU									
GV									
RD									
WH									
+HC/6.9/24V									
+HC/6.9/0V									
+ULC/8.9/PE									
+CP									
-W28 5x0,34									
-W29 2x0,34									
+TS									
R1 ZK0000_842									
Wago									
Kunde customer									
-S7 ZK0000_860									
Temperaturanzeige									
P1 ZK0000_843									
GND									
9-12VDC									
sensor									
sensor									
+									
BU									



-W27
3x1,5
BW BU G2VE



UV Filter mit Glaskolben
UV filter with glass bulb



febromed GmbH & Co. KG

Am Landhagen 52

D-59302 Oelde

Phone: +49 0 2522 9201900

Fax: +49 0 2522 9201919

Internet: www.febromed.de

E-mail: info@febromed.de