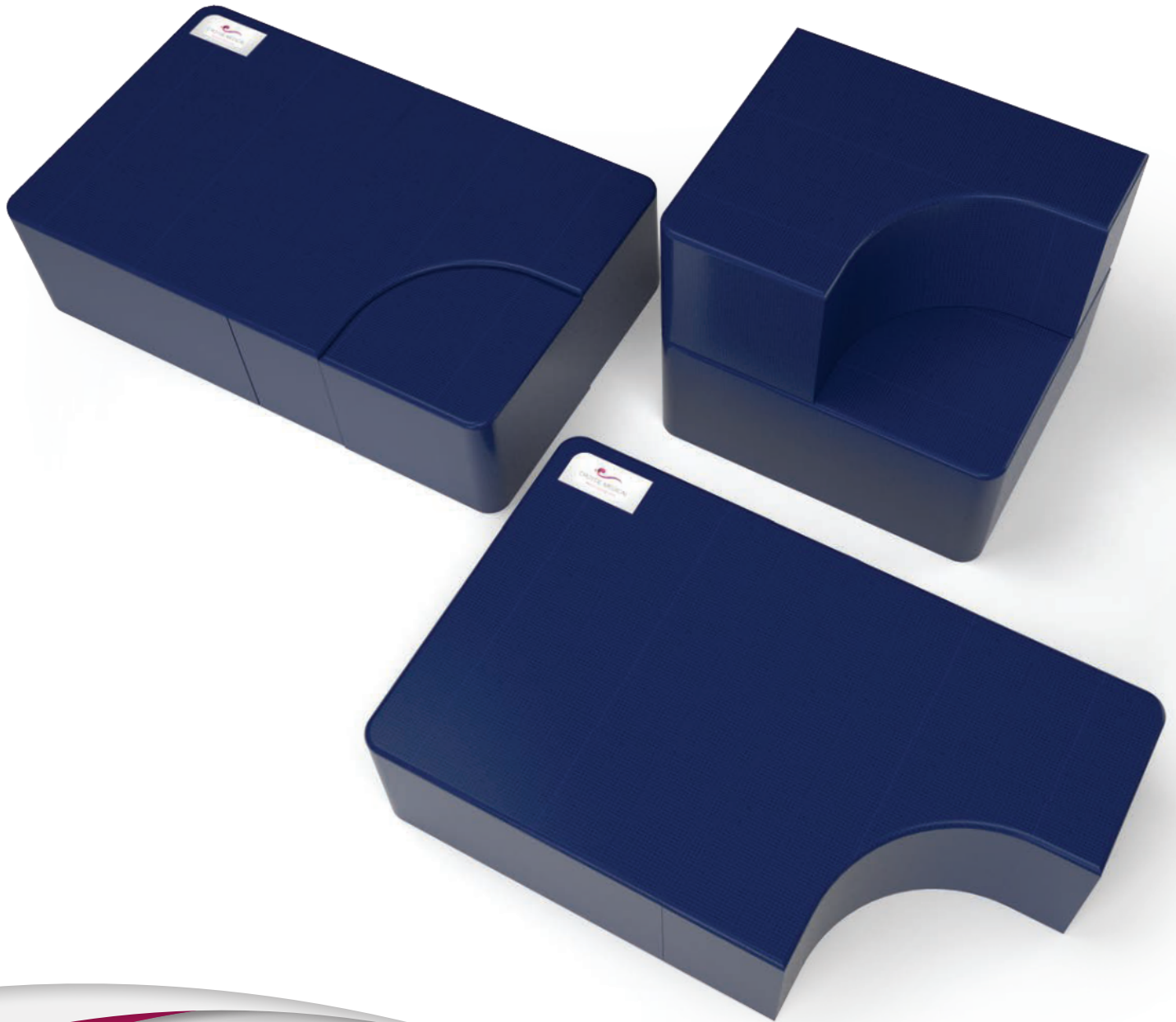


Croyde Birthing Couch

Instructions for Use



CROYDE MEDICAL

Maternity Equipment Specialists



Croyde™
Birthing Couch

Specifications

Mattress core: Combustion Modified Polyether.

Mattress topper: High Density Visco-elastic Memory foam.

Fabric Cover: Two way knitted stretch, vapour permeable with a polyurethane transfer coating.

Dimensions

Folded Length: 1000mm
 Width: 1220mm
 Height: 870mm

Unfolded Length: 2000mm
 Width: 1220mm
 Height: 435mm

Weight 29Kgs

Fire safety

The Birthing Couch is compliant with the medium hazard category flammability requirements of BS 7177: 2008 + A1: 2011. Method of Test - BS EN 597-1: 1995, BS EN 597-2: 1995 & BS 6807: 2006 Clause 9

Caution:

- When unpacked from new, a faint chemical smell or odour may be noticed. This is normal for new foam. The odour is not harmful and will fade away within a few days.
- The surface of the Birthing Couch takes the shape of the body in response to body heat and pressure. As the foam surface of the Birthing Couch is sensitive to heat, it may feel firmer when the ambient temperature is less than 18 degrees Celsius. Allow the Birthing Couch temperature to stabilise in a warm room for four to five hours before use.
- Do not use heat pads or electric blankets with the Birthing Couch.
- Needles, jewellery or other sharp objects can damage the fabric and void the warranty. Take extra care when using needles. Remove Jewellery and other sharp objects. Replacement covers can be ordered from Croyde Medical Ltd.
- Do not allow fluids to enter the mattress via the zip. Ensure the cover flap of the zip is either in place during use or is covered by a sheet if being used in the chair position.
- Routinely inspect the inside of the cover for stains caused by fluid ingress and replace any damaged cover.
- Always add the transport tray before moving the Birthing Couch from one location to another.
- Never drag the Birthing Couch along the floor without using the transport tray.
- Failure to use the transport tray will invalidate the warranty.
- Always ensure that the handles of the transport tray are stowed inside the tray when not being used. Leaving the handles exposed may present a trip risk.
- Always remove the transport tray before use.

- Always place the Birthing Couch against at least one stable surface before use. Carry out a risk assessment in respect of unwanted and unexpected movement. Position the Birthing Couch for maximum safety.
- Always control the descent of the head or foot end of the Birthing Couch when unfolding or folding the sections. Do not allow it to drop to the floor. Excessive strain on the folding seam caused by uncontrolled descent may invalidate the warranty.
- Always position hands on the underside of the couch when starting to fold the Birthing Couch. Do not grab the top cover / foam to lift or move the Birthing Couch.
- Always use a fitted sheet (available from Croyde Medical Ltd) or carry out a risk assessment for any other type of sheet when using the Birthing Couch as a bed. Ensure that the sheet safely secures the couch and the wedge together.
- Always use the wedge at the foot end of the couch when using it as a bed.
- Always check the stability of the wedge before using it either as a seat or a positioning aid.
- Always remove shoes before placing feet on the Birthing Couch or the wedge.
- Clean the Birthing Couch before placing it in storage.
- Do not use phenolic, alcohol or biological substances for cleaning or disinfection.
- Store the Birthing Couch in a clean and dry environment.
- When not in use, do not store equipment or any other items on top of, or leaning against, any surface of the Birthing Couch.

Unpacking and preparing for use



○ Remove the top cover .



○ Unfold the Birthing Couch.



○ Remove the wedge and place nearby.



○ Fold the head end over.



○ Remove the transport tray.



○ Unfold the Birthing Couch to achieve the couch position (if desired).

Configuration options

The Birthing Couch is design to enable total freedom of movement and positioning for the expectant mother. Some of the many configuration possibilities include:



○ Positioning



If required as a bed, insert the wedge into the couch. Always ensure the wedge is inserted **and used** with the wedge at the foot end of the couch.

Use a fitted bed sheet (available via Croyde Medical Ltd) or other “appropriate” sheet to ensure the wedge and the couch are safely held together. Carry out a risk assessment before using any other “appropriate” sheets.

Cleaning and storing the Birthing Couch

- Always use locally approved cleaning and disinfection products.
- Croyde Medical recommends disinfection using sodium hypochlorite up to a maximum concentration of 10,000ppm of available chlorine.
- Always rinse with clean water to remove chemical residue then dry the Birthing Couch¹.
- Failure to rinse and dry may affect the longevity of the cover and invalidate the warranty.
- Always dry completely before storage.
- Some surface wrinkling may occur.
- Never use abrasive cleaning materials.
- Repeated cleaning may fade the colour of the cover and printed logos. This is not covered by the warranty.
- Read the British Healthcare Trades association publication “Protect, Rinse and Dry” at: <http://staging.bhta.totalweb.net.uk/content/protect-rinse-and-dry.html-0>

¹British Health Trades Association recommendations: BHTA HM 0112

Clean, rinse then dry all surfaces of the wedge and place nearby. Clean, rinse and dry all of the top surface of the couch.



Fold the head end of the Birthing Couch onto the foot end. Clean, rinse then dry the sides and base of the Birthing Couch.



Fit the transport tray then fold the head end back to flat and insert the transport handles into the tray.



Fold the foot end of the Birthing Couch onto the head end. Clean, rinse then dry the sides and base of the Birthing Couch.



Place the wedge in position & fit the top cover.



Move the Birthing Couch to its storage location, tuck the transport handles into the tray & fit the cover if applicable.

Warranty

The Birthing Couch has a 3-year limited guarantee under the following terms.

The Birthing Couch will be replaced or repaired if it is defective due to faulty workmanship or materials except as specified below.

The 3-year limited guarantee does not include a normal increase in softness of the Birthing Couch foam or any decrease in the speed of recovery of the foam back to a flat surface after use, both of which do not affect the overall properties and comfort of the Birthing Couch.

The guarantee does cover any permanent deterioration of the foam caused by indentation of greater than two and a half (2.5) cm which is associated with storage of equipment or any other items on or against any surface of the Birthing Couch. The outer cover is guaranteed for one year for faults in material or workmanship.

The guarantee shall not apply if:

- The Birthing Couch or covers have been physically damaged including needle punctures, scratches, scrapes, cuts or indentation caused by any means including the storage of any equipment or other items on top of, or leaning against, any surface of the Birthing Couch.
- The Birthing Couch has been cleaned or disinfected with substances other than locally approved cleaning and disinfection products.
- Abrasive cleaning materials have been used.
- The Birthing Couch is abnormally soiled or is unsanitary due to lack of care.
- The Birthing Couch inner cover or core have been affected by strikethrough.

Warranty Claims Process

- Call 01367 241194 to make a warranty claim or email info@croydemedical.co.uk.
- Croyde Medical Ltd may ask for images to be sent to support corrective action.
- Return of defective items for inspection may be required if images are not conclusive.
- Replacement items e.g. covers, will be sent via courier and will be the responsibility of the customer to fit.
- Agreement for disposal should be confirmed with Croyde Medical Ltd. Warranty may become invalidated if the alleged defective item is not available for inspection.
- Disposal of defective items is the responsibility of the customer if done so at customer site.



CROYDE MEDICAL
Maternity Equipment Specialists

Croyde Medical, Unit 7, Regal Way,
Faringdon, Oxon SN7 7BX
www.croydonmedical.co.uk